



Alt + Shift

Rethink the possible. Realize potential.

“Every learner has special needs.”

–Andy Hargreaves

Alt+Shift collaborates with educators and families to improve educational outcomes for every learner by rethinking what is possible.

Learners do not need to be “ready” to be included. Programs need to be ready to support all learners. Alt+Shift provides training, technical assistance and co-constructed implementation planning designed to create and sustain accessible educational environments in which students learn and thrive.



Alt+Shift is an Individuals with Disabilities Education Act (IDEA) Grant Funded Initiative through the Michigan Department of Education, Office of Special Education.

altshift.education
info@altshift.education



Alt + Shift

Rethink the possible. Realize potential.

Alt+Shift offers professional learning opportunities that improve educators' abilities to unlock and experience each learner's true capacity for learning. Implementation of new practices takes time. Through ongoing engagement we collaborate with ISDs to provide adults with the beliefs, knowledge and skills they need to build capacity at all levels and improve outcomes for every learner.

Foundations of Math

A shift in mathematical thinking can change mathematical outcomes

Should more of your learners with disabilities be proficient in math? This course, focused on mathematical content knowledge, allows general and special education teachers to examine mathematical procedures from a conceptual standpoint and increase sense making for learners who struggle with methods reliant on memorization and procedure. Participants will learn how making pedagogical shifts can increase student engagement and improve math achievement for every learner.



Delta Math

Made in Michigan to maximize potential

Delta Math is an RTI (response to intervention) program developed by the Ottawa Area ISD with support from Alt+Shift/(MI)² and Michigan math consultants to improve readiness to learn in math classes from kindergarten through Algebra 1. It includes online readiness screeners to identify students for tier two interventions, tier three screeners for students not responding to tier two interventions, reports, progress monitoring and instructional resources.



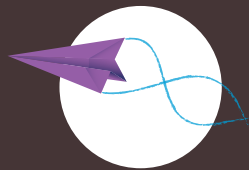
Pragmatic Organization Dynamic Display (PODD)

*Promoting autonomous communication
and genuine conversations*

PODD is an augmentative and alternative communication (AAC) tool that arranges a robust vocabulary, typically as a low-tech book, to support language development for learners with complex communication needs. Language is organized in a practical layout that requires minimal page turns to communicate.

PODD introductory training is offered through the Building Blocks professional learning opportunity.

Participants are taught to select, customize and use PODD books and aided language input to promote autonomous communication for learners with complex communication needs.

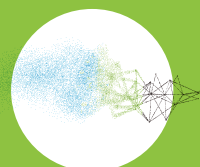


Accessible Materials Made Right (AMMR)

Design with accessibility in mind

If you want your messages (via website, emails, presentations, etc.) to reach everyone, a proactive approach to content creation is critical. Nearly 20% of the U.S. population has some form of disability that can affect vision, hearing, dexterity, mobility and more.

AMMR is available through a series of online modules (Edupaths) designed to guide creators of digital content — including administrators, school faculty, support staff, office staff and technology specialists — on how to improve the accessibility of documents and presentations that they create. Accessible design eliminates barriers that prevent learners and consumers from receiving information.



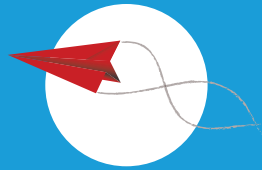
Comprehensive Literacy Instruction for Students With Significant Disabilities

No student is too anything to be able to read and write

Autonomous communication requires literacy, and our goal must be to allow all learners to express what they want to communicate.

Literacy partnerships are offered through the Building Blocks professional learning opportunity.

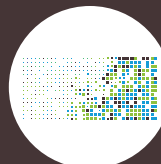
Classroom and ancillary staff are taught how to structure daily literacy instruction for learners with significant disabilities and complex communication needs. This course is offered in Michigan through collaboration with the course authors, Dr. Karen Erickson and Dr. David Koppenhaver.



Building Blocks to Autonomous Communication

All learners have the right to communicate

Building Blocks is for personnel who work in settings with learners with complex communication needs. Communication is a prerequisite for teaching and learning. Participants will learn the what, why, and how of supporting learners with complex communication needs including implementing tools and strategies for embedding AAC practices with all learners and creating systems to support the sustainability of the effort.



Assistive Technology Journey

Road to independence

Assistive technology (AT), defined as anything that supports learners in doing things they would not otherwise be able to do, can provide the traction learners need to succeed but is often intimidating to educators who think of it as very specialized. Staff participating in the AT Journey will be empowered to individually consider, select and implement AT for their students, yet also recognize when additional perspectives (e.g., teacher, administrator, itinerant staff, paraprofessional, parent, etc.) are critical to this process.



Assistive Technology Lending Library

Discover the possibilities

Michigan PK-12 public schools can explore and borrow a variety of assistive technologies (AT) available for learners with individualized education programs. This trial period will assist schools in determining effectiveness before acquiring the AT, discovering the potential of their learners.



Foundations of Math: Teaching Students with Significant Disabilities

Math made possible for everyone

With the right supports and knowledge, all teachers and learners can engage in the teaching and learning of mathematics. This course includes all components of Foundations of Math with the addition of research and classroom video specific to learners with significant disabilities and complex communication needs. Educators in self-contained and center-based environments will experience approaches to assessment and instruction that will help learners develop meaningful mathematical understanding.



altshift.education